

HOLMES MILL
CLITHEROE



TRAD XMAS PARTIES

THURSDAY 6TH, 13TH & 20TH | FRIDAY 7TH & 14TH
SATURDAY 1ST & 22ND

Come & join us for a truly TRADitional Christmas party night! Perfect for company celebrations or a great night out for groups large or small. We start with a three course meal and then the DJ will have you on your feet to dance the night away!

Starters

WINTER VEGETABLE SOUP (V)
chive oil and ciabatta bread roll

CHICKEN LIVER PÂTÉ
mulled fruit chutney and olive oil crostini

MELON AND PARMA HAM (GF)
red wine and cinnamon stewed berries

SMOKED SALMON AND PRAWN COCKTAIL
iceberg lettuce and cocktail sauce

Mains

ROASTED LANCASHIRE TURKEY
roast potatoes, pigs in blankets, stuffing and traditional gravy

ROAST SIRLOIN OF PENDLE BEEF
roast potatoes, Yorkshire pudding, tray jus

ROAST FILLET OF SALMON (GF)
new potatoes, lemon herb and shrimp butter

WILD MUSHROOM WELLINGTON (V)
spinach, celeriac and cream leek sauce

ALL SERVED WITH ROASTED WINTER VEGETABLES

Desserts

CHRISTMAS STICKY TOFFEE PUDDING (V)
toffee sauce and vanilla gelato

BLACK FOREST GATEAU (V)
sweet chestnut and cinnamon cream

CHAMPAGNE SORBET (GF)
orange jelly

£29.50pp
THURSDAYS

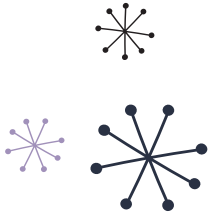
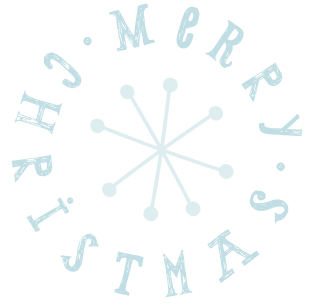
£32.50pp
FRIDAYS &
SATURDAYS

MERRY
CHRISTMAS

ARRIVAL FROM 7.30PM, DINNER FROM 8PM, CARRIAGES 12.30AM

(GF) MADE WITHOUT GLUTEN (V) VEGAN

HOLMES MILL
CLITHEROE



TRAD

XMAS PARTIES

ORDER + BOOKING FORM

Christmas and New Year are a busy time of year for us and so we need to make sure that everything goes according to plan. For you and for us!

To help, we have devised a simple and easy to follow booking and pre-order system. We require a deposit of £10.00 per person to confirm your booking. Credit cards and good old cash are welcome. Balance of payment and preorders are required 28 days prior to booking date.

All party guests are required to arrive prior to the dining time to avoid any delays. If you need to cancel the party or change the number of guests, please tell us as soon as possible. Deposits can be refunded up to 28 days in advance of the booking.

After that, I'm afraid that all deposits are non-refundable and non-transferable. If you have any dietary requirements, need more information or some help with your booking, call us on 01200 407183 and we'll be happy to help in any way we can.

www.holmesmill.co.uk

Holmes Mill, Greenacre Street,
Clitheroe BB7 1EB | 01200 407183
enquiries@holmesmill.co.uk

DATE OF BOOKING:

BOOKING NAME:

EMAIL ADDRESS:

CONTACT NUMBER:

TOTAL DINING:

PAYMENT METHOD:

DATE DEPOSIT PAID:

DINING TIME:

TOTAL DEPOSIT:

To make your reservation and pre-order please call 01200 407183.

TOTAL

- Winter vegetable soup (v)
- Chicken liver pâté
- Melon and palma ham (gf)
- Smoked salmon and prawn cocktail
- Roast Lancashire turkey
- Roast sirloin of Pendle beef
- Roast salmon (gf)
- Wild mushroom wellington (v)
- Christmas sticky toffee pudding (v)
- Black Forest gâteau (v)
- Champagne sorbet (gf)

*Please notify us of any dietary requirements.

Please tick if you would like to receive details of future news, events & offers.